



SUTANTRA
Achieving excellence beyond limits

Date: -14/08/2023

To,
SARDHANA PAPERS PVT LTD
MEERUT

Kind Attn: Mr. Sanjay Rastogi Ji, Mr. Manoj Gupta Ji

Dear Sir,

Sub: Request for advance

We thank you very much for kind courtesy extended to Vikas Jha during his visit to your office on 12/8/2023.

As per your discussions they had with your goodself regarding your order confirmation of Pulp Mill Equipments. We request you to kindly release the advance through bank.

Please find our bank details as below:

Su Tantra Equipments Pvt Ltd
The Federal Bank, Aurangabad, Maharashtra, India
CC-A/C No- 14565500000647, IFSC Code- FDRL0001456

Any further information / clarification if required will be gladly furnish on hearing from you.

Thanking you and assuring you our best services at all times.

Yours Sincerely,
For Su-Tantra Equipments PVT LTD
Hemant Kate
Director (Sales)
+919326193913

Sanjay Rastogi Ji on 14/8/23
MS

ANNEXURE – II
COMMERCIAL OFFER

SR. NO.	EQUIPMENTS	QTY	RATE/EQUIPMENT (INR)	TOTAL AMOUNT (INR)
1	HICON PULPER 25 M ³	1 No.	25,80,000/-	25,80,000/-
2	DETRASHER-1500	1 No.	10,30,000/-	10,30,000/-
3	CONTROL PANEL	1 No.	2,50,000/-	2,50,000/-
4	WHIRLPOOL PULPER 25 M ³	1 No.	21,50,000/-	21,50,000/-
5	RAGGER	1 No.	3,00,000/-	3,00,000/-
6	HIGH DENSITY CLEANER 4000 LPM	2 No.	3,00,000/-	6,00,000/-
7	PRESSURE SCREEN M-10 (HOLE-2.2mm)	1 No.	13,76,000/-	13,76,000/-
8	TURBO SEPARATOR-900	1 No.	7,70,000/-	7,70,000/-
9	4 STAGE CENTRI CLEANER 600 LPM 40+12+4+1	1 No.	19,78,000/-	19,78,000/-
10	COMBO SCREEN	1 No.	11,18,000/-	11,18,000/-
11	PRESSURE SCREEN L-12 (SLOT 0.25mm)	1 No.	19,78,000/-	19,78,000/-
12	PRESSURE SCREEN L-08 (SLOT 0.30mm)	1 No.	9,46,000/-	9,46,000/-
13	POLY DISC FILTER (20 Disc)	1 No.	72,24,000/-	72,24,000/-
14	PRESSURE SCREEN L-12/15 (SLOT 0.30mm)	1 No.	21,00,000/-	21,00,000/-
15	PRESSURE SCREEN L-06 (SLOT 0.35mm)	1 No.	6,00,000/-	6,00,000/-
	TOTAL		2,50,00,000/- (Two Crore Fifty Lakh Only)	

Address G-54, MIDC, Chikalthana, Aurangabad – 431006

Contact: +91 9823435904 / +91 9326193913 Email : sutantraequipments@gmail.com

TERMS & CONDITIONS:

Prices	: Ex our works Aurangabad. India
Packing charges	: NIL
Taxes and Duties	: Presently 18% GST Extra.
Delivery Period	: 3-5 Months
Payment	: 10% after receiving order acceptance, 20% after 1 Month, 60% along with all GST payment against Pro forma invoice when the machines become ready for dispatch, 5% PDC after commissioning & 5% PDC after 6 Months
Bank Details	: The Federal Bank, Aurangabad, Maharashtra, India CC-A/C No- 14565500000647, IFSC Code- FDRL0001456, Swift code- FDRLINBBIBD
Freight	: To be borne by you.
Transit Insurance	: If needed should be arranged by you at your cost.
Validity	: This offer is valid for 30 days.



SUTANTRA
Achieving excellence beyond limits

Date: - 05/08/2023

To,
SARDHANA PAPERS PVT LTD
MEERUT

Kind Attn: Mr. Sanjay Rastogi, Manoj Gupta,

Dear Sir,

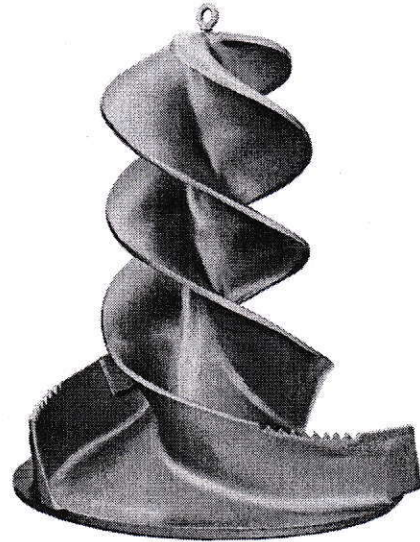
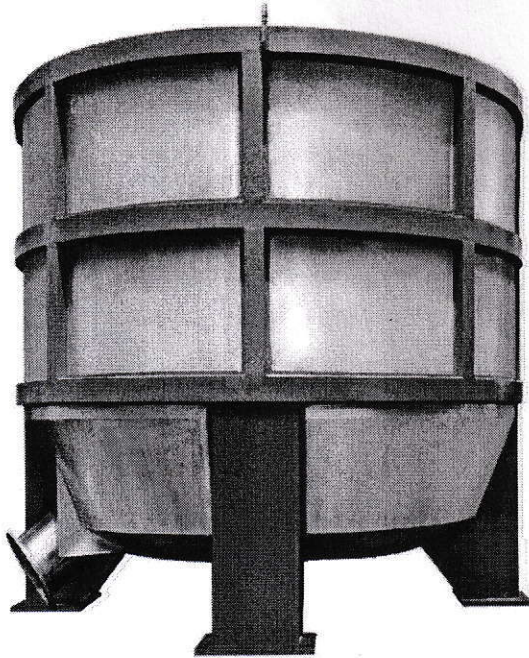
Sub: Revised Offer for Pulp Mill Equipments

Thank you very much for visiting our works on 05/08/2023. As per the detailed discussions, please find herewith attached our techno-commercial proposal for the pulp mill equipment for kraft project. Any further information / clarification if required will be gladly furnish on hearing from you.

Yours Sincerely,
For Su-Tantra Equipments PVT LTD
Hemant Kate
Director (Sales)
+919326193913

ANNEXURE - I
TECHNICAL OFFER

1. HICON PULPER 35 M³



Operating Data

✓ Pulper capacity	: 250 TPD
✓ Tub Volume	: 40 M ³
✓ Slushing Volume	: 35 M ³
✓ Operating Consistency	: 14-15 %
✓ Operating Temperature	: 60- 70 degree C
✓ Drive	: Gear Box (Customer Scope)
✓ Power	: 650 KW/1470 RPM

Material of Construction:

Tub shell in 8 & 6 mm thk, bottom cone in 8 thk SS-304, bottom flat circular portion in 32 mm thk MS duly lined with 3 mm thk SS 304 sheet. 3 Baffles provided for better agitation. All nozzles like stock discharge, water dilution and steam inlet are in SS304. All around outside the tub suitable stiffening provided for strengthening it.

3 Nos. mounting legs in MS fabrication

Base Plate for mounting of Impeller in SS 304

Shaft in SS -431 steel duly provided with grease lubricated heavy duty antifriction bearings. Shaft protecting sleeve, stuffing box etc. all in SS-304

A 3 flight cast cum fabricated rotor duly hard faced on working edges and dynamically balanced is provided to give a gentle vortex for creating fiber to fiber friction and avoid the cutting of plastics etc.

CI pulleys with taper lock Bush arrangement.

Exclusions:

Gear Box, Coupling, Conveyor, Foundation bolts, belt, Motor, and all electrical are in customer's scope.

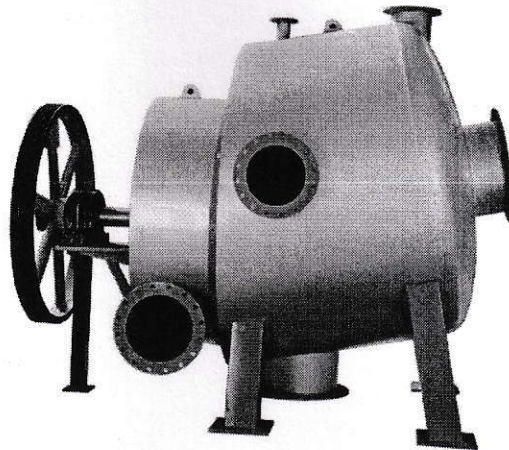
SPECIAL FEATURES OF SUTANTRA HICON PULPER ROTOR

The SUTANTRA make 3 flight impeller is cast cum fabricated unit with special geometry is strong in construction and it slushes the entire stock quite homogeneously but with low power consumption

2. DETRASHER-ST-TX-1800:

Address G-54, MIDC, Chikalthana, Aurangabad – 431006

Contact: +91 9823435904 / +91 9326193913 Email : sutantraequipments@gmail.com



Technical and Operating specifications:

- ✓ Model : ST-TX-1800
- ✓ Operating Consistency(%) : 3.5-4.0
- ✓ Motor Power (KW) : 150
- ✓ Rotor Dia.(mm) : 1800
- ✓ Screen Plate : Dia 1950 x 12 mm THK
- ✓ Screen Perforation(mm) : 8-10(as per requirement)
- ✓ Drive : V Belt Drive

Material of Construction and Scope of Supply:

- ✓ Tub : Fabricated in 8 mm SS-304 sheet including the Inlet, outlet, and air vent nozzle & inspection port.
- ✓ Extraction Chamber : Fabricated in 8 mm SS304 sheet.
- ✓ Screen Plate : SS-304 Plate with countersunk Perforations.
- ✓ Supporting frame and base : Fabricated in MS
- ✓ Stuffing Box : SS 304 casting.
- ✓ Rotor : In SS-304 duly Hard faced and dynamically balanced
- ✓ Shaft : Martenistic stainless steel grade-431.
- ✓ Sleeve : SS-304
- ✓ Bearings : Heavy duty bearings in Sturdy Plummer bocks.
- ✓ Drive and driven pulleys are part of supply.
- ✓ Motor and valves are excluded from our supply.

3. PNEUMATIC CONTROL PANEL (PLC BASED) (All valves are excluded from our scope)

PLC control panel provided to operate the system.

- ✓ PLC Controllers & Touch Screen
- ✓ Air Pressure Switch
- ✓ Pressure gauge
- ✓ Relay Board 24V
- ✓ SMPS : Input 230VAC Output 24VAC
- ✓ FRL
- ✓ Control panel all Switches and buttons

Exclusions:

Field Tubing & Wiring, Field instruments, Pneumatic & manual valves, pressure gauges.

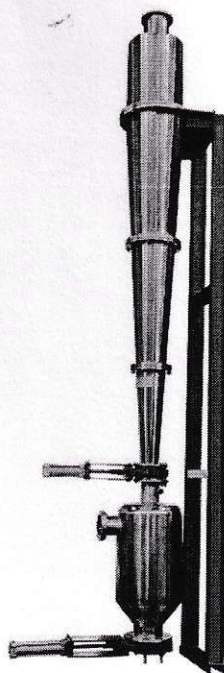
General Exclusions:

- ✓ All connecting Pipe Line, Valves & fittings
- ✓ The RCC Chests and Fabricated Tanks.
- ✓ Instruments, controls and control desk.
- ✓ Motor ,pumps Gear Box, Foundation Bolts
- ✓ Cable, Tubing (Hydraulic and Pneumatic)
- ✓ Electric Controls.
- ✓ Field Instruments.
- ✓ Manual and Control Valves.
- ✓ Pneumatic Valves other than specified.
- ✓ Any other items which are not mentioned in our offer.

4. HIGH DENSITY CLEANER 4000 LPM – 2 NOS

Address G-54, MIDC, Chikalthana, Aurangabad – 431006

Contact: +91 9823435904 / +91 9326193913 Email : sutantraequipments@gmail.com



Technical and Operating specifications:

- ✓ Throughput LPM : 4000LPM
- ✓ Operating Consistency % : 2.5 – 3.0%
- ✓ Inlet Pressure Kg/sq.cm. : 2.5
- ✓ Pressure drop Kg/sq.cm. : 0.5 – 1.0
- ✓ Dilution Water Pressure : 2kg/sq.cm

Material of Construction and Scope of Supply:

- ✓ Main body Fabricated from SS-304 Plate with inlet, outlet and flushing water nozzles with SS flanges.
- ✓ Reject chamber of SS 304 with flushing water nozzle.
- ✓ Supporting bracket of MS.
- ✓ Flexi glass for reject chamber & Fiber Saver System.

Accessories:

One Control Box for operation of 2 nos. of pneumatic valves with timer control.

5. VERTICAL PRESSURE SCREEN MEDIUM CONSISTENCY:

Technical and Operating specifications:

✓ Model	: ST-VPS-M-10
✓ Operating Consistency (%)	: 1.5-2.5%
✓ Rotor speed (RPM)	: 290
✓ Motor speed(RPM)	: 1450
✓ Motor rating(HP/KW)	: 120/90
✓ Type of Rotor vanes	: SU-TANTRAHURRICANE TYPE (All vanes are duplex steel.)
✓ Rotor	: SS-304 (dynamically balanced)
✓ Inlet Pressure (kg / sq.cm)	: 1.5(min)
✓ Pressure drop(kg / sq.cm)	: 0.3 – 0.5
✓ Dilution Water Pressure	: 2kg/sq.cm
✓ Sealing water required(LPM)	: 5 at 2.5 kg/sq.cm

Material of Construction:

✓ Main body	: SS-304 Sheet with inlet, outlet, heavy reject and dilution Nozzles with flanges
✓ Top cover	: SS-304 Dish end with vent nozzles for lightweight reject
✓ Rotor	: SS-304 (dynamically balanced)
✓ Shaft	: Martenistic Stainless Steel Grade 431.
✓ Sleeve	: SS 410
✓ Bearings	: STD Make
✓ Base frame	: M.S Fabricated
✓ Bearing Housing of CI	: All contact parts of SS 304
✓ Stuffing Box & Gland Packing	: SS 304 and Teflon impregnated.
Screen Drum	: 1000I.D x 1000 L
Hole size (mm)	: 2.2/ 2.5
MOC	: 6mm THK. Sheet SS316L (200 microns hard chrome Coated) Top & Bottom Flanges SS304.



- ✓ Lower Power Consumption comparable with other OEM.
- ✓ Three Bearings including bottom Thrust Bearing.
- ✓ All STD Make Bearings.
- ✓ Motor Mounting Stand along With Machine.
- ✓ Screen Basket with **SS 316L, Electro- Polished Having 200 μ Hard- Chrome Plated**
- ✓ Type of vanes : **Hurricane ,Gladiator Type(All vane are Super duplex SS)**

Scope of Engineering:

- ✓ Foundations plan for the equipment.
- ✓ Buyout Specification of Motor and Foundation bolts.
- ✓ Operating and Maintenance manuals.

Accessories:

C.I. Drive & Driven pulleys with dynamically balanced.

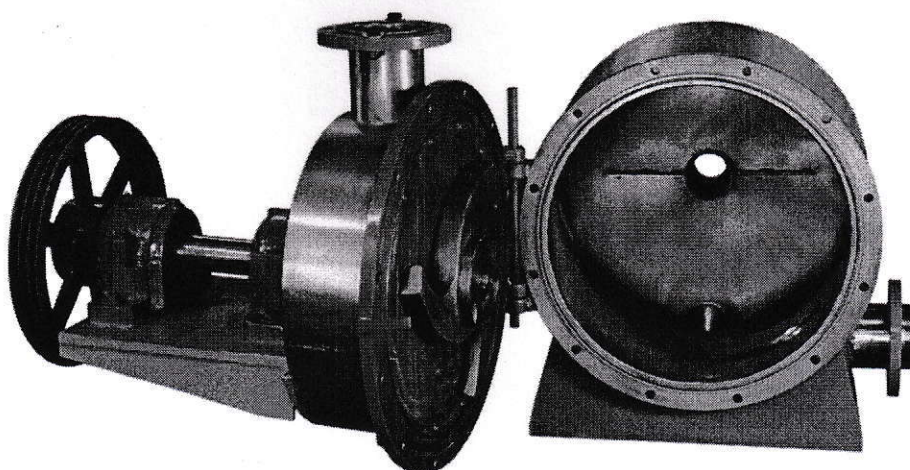
Exclusions:

Control Panel, Motor, Pressure Gauge, Foundation Bolts, Belt and Valves.

Address G-54, MIDC, Chikalthana, Aurangabad – 431006

Contact: +91 9823435904 / +91 9326193913 Email : sutantraequipments@gmail.com

6. TURBO SEPARATOR:



Technical and Operating specifications:

✓ Model	: ST-TS-800
✓ Impeller Diameter (mm)	: 800
✓ Motor Power (HP/KW)	: 90/66
✓ Motor Rating (RPM)	: 1470
✓ Rotor (RPM)	: 480
✓ Screen Plate Perforation (mm)	: Dia 2.8/2.5
✓ Operating Consistency(%)	: 2.0-2.5
✓ Drive	: V PULLEY DRIVEN(PC 850 X 4C and PC 280 X 4C)

Material of Construction:

✓ Main body	: SS-304 with inlet, outlet and heavy reject nozzles with MS Slip on flanges.
✓ Impeller	: Cast in SS-304 duly all over machined, hard faced & Dynamically balanced

- | | |
|------------------------|---------------------------------|
| ✓ Shaft | : EN-9 |
| ✓ Sleeve | : SS 410 |
| ✓ Stuffing Box & Gland | : SS 304 |
| ✓ Base frame | : M.S Fabricated |
| ✓ Bearings | : STD Make |
| ✓ Plummer Block | : Standard make heavy duty C.I. |

SCOPE OF SUPPLY:

Following parts are in scope of supply.

- ✓ Vat with base frame.
- ✓ Impeller with rotating unit.
- ✓ Screen plate with extraction chamber.
- ✓ Drive & Driven pulleys.

7. FOUR STAGE LOW CONSISTENCY CENTRI CLEANING SYSTEM

FOUR STAGE LOW CONSISTENCY CENTRI CLEANING SYSTEM 40+12+4+1(With Fiber Saver at last stage) 57 NOS.

Technical and Operating specifications:

- ✓ Operational Mode : Continuous
- ✓ Capacity : 600 LPM each bottle
- ✓ Inlet Pressure Kg/sq.cm : 2.5 Kg/sq.cm
- ✓ Pressure drop : 1.0 bar
- ✓ Operating consistency : 0.7-1.2 %



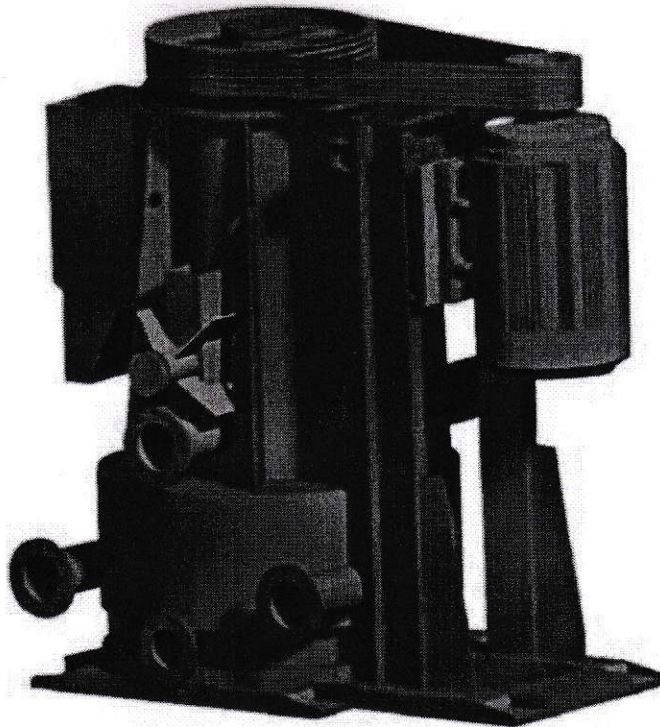
Material of Construction and Scope of Supply:

- ✓ Bottle fabricated from SS 304 Plate with inlet, outlet and flushing water nozzles.
- ✓ SS 304 fabricated taper Headers for Inlet & Outlet.
- ✓ Reject nozzles in Poly pick

General Exclusions:

- ✓ All connecting Pipe Line, Valves & fittings
- ✓ The RCC Chests and Fabricated Tanks.
- ✓ Instruments, controls,
- ✓ Electric Controls.
- ✓ Field Instruments.
- ✓ Manual and Control Valves.
- ✓ Pneumatic Valves
- ✓ Any other items which are not mentioned in our offer.

8. COMBO SCREEN:



COMBOSCREEN

Design Data:

✓ Application	: Pulping and Cleaning
✓ Raw Material	: Reject of Coarse screen.
✓ Capacity	: 60-80
✓ Inlet Consistency	: 2-3%
✓ Inlet Pressure(Bar)	: 1.5-2.5
✓ Reject Consistency	: 15-30 %
✓ Dilution Water Pressure	: 2-3bar.
✓ Installed Power(kW)	: 110/ 1440 RPM

Material of Construction:

- ✓ Main body : SS-304 Sheet with inlet, outlet, heavy reject and dilution
Nozzles with flanges with MS stiffeners, basalt lining at bottom chambers
- ✓ Rotor : SS-304 Su-Tantra design
(Dynamically balanced)
- ✓ Impeller : SS-304 9 Vane Impeller Dia.960mm Duly hard faced and
Dynamically balanced
- ✓ Screen Plate : SS-304, Dia. 1040mm with 3.2mm Tapper Hole
Perforation
- ✓ Screen Basket Size : ID 505 x 1000L
- ✓ Hole size(mm) :2.8 mm
- ✓ MOC : 5mm THK. Sheet SS316L (200 microns hard chrome)
- ✓ Shaft : Martenistic Stainless Steel Grade 431.
- ✓ Sleeve : SS 410
- ✓ Bearings : STD Make
- ✓ Base frame : M.S Fabricated
- ✓ Bearing Housing of CI : All contact parts of SS 304
- ✓ Stuffing Box & Gland Packing : SS 304 and Teflon impregnated

Exclusions:

Electric Motor, Foundation Bolt, Pressure Gauges, Feed Pump, all civil and Electrical Work, Etc

9. VERTICAL PRESSURE SCREEN LOW CONSISTENCY:

Technical and Operating specifications:

✓ MODEL	: ST-VPS-L-12
✓ Operating Consistency (%)	: 0.6-1.2%
✓ Rotor speed (RPM)	: 186
✓ Motor speed(RPM)	: 1450
✓ Motor rating(HP/KW)	: 120/90
✓ Type of Rotor vanes	: AEROFOIL DESIGN (All vanes are duplex steel.)
✓ Rotor	: SS-304 (dynamically balanced)
✓ Inlet Pressure (kg / sq.cm)	: 1.5(min)
✓ Pressure drop(kg / sq.cm)	: 0.3 – 0.5
✓ Dilution Water Pressure	: 2kg/sq.cm
✓ Sealing water required(LPM)	: 5 at 2.5 kg/sq.cm

Material of Construction:

✓ Main body	: SS-304 Sheet with inlet, outlet, heavy reject and dilution Nozzles with flanges
✓ Top cover	: SS-304 Dish end with vent nozzles for lightweight reject
✓ Rotor	: SS-304 (dynamically balanced)
✓ Shaft	: Martensitic Stainless Steel Grade 431.
✓ Sleeve	: SS 410
✓ Bearings	: STD Make
✓ Base frame	: M.S Fabricated
✓ Bearing Housing of CI	: All contact parts of SS 304
✓ Stuffing Box & Gland Packing	: SS 304 and Teflon impregnated.

Screen Drum	: 1192I.D x 1200 L
Slot size (mm)	: 0.25
MOC	: Wedge wireSS316L (200 microns hard chrome coated) Top & Bottom Flanges SS304.



- ✓ Lower Power Consumption comparable with other OEM.
- ✓ Three Bearings including bottom Thrust Bearing.
- ✓ All STD Make Bearings.
- ✓ Motor Mounting Stand along With Machine.
- ✓ Screen Basket with SS 316L, Electro- Polished Having 200 μ Hard- Chrome Plated
- ✓ Type of vanes : AEROFOIL DESIGN(All vane are duplex SS)

Scope of Engineering:

- ✓ Foundations plan for the equipment.
- ✓ Buyout Specification of Motor and Foundation bolts.
- ✓ Operating and Maintenance manuals.

Accessories:

C.I. Drive & Driven pulleys with dynamically balanced.

Exclusions:

Control Panel, Motor, Pressure Gauge, Foundation Bolts, Belt and Valves.

Address G-54, MIDC, Chikalthana, Aurangabad – 431006

Contact: +91 9823435904 / +91 9326193913 Email : sutantraequipments@gmail.com

11.VERTICAL PRESSURE SCREEN LOW CONSISTENCY:

Technical and Operating specifications:

✓ MODEL	: ST-VPS-L-08
✓ Operating Consistency (%)	: 0.8-1.5%
✓ Rotor speed (RPM)	: 307
✓ Motor speed(RPM)	: 1450
✓ Motor rating(HP/KW)	: 60/45
✓ Type of Rotor vanes	: AEROFOIL DESIGN (All vanes are duplex steel.)
✓ Rotor	: SS-304 (dynamically balanced)
✓ Inlet Pressure (kg / sq.cm)	: 1.5(min)
✓ Pressure drop(kg / sq.cm)	: 0.3 – 0.5
✓ Dilution Water Pressure	: 2kg/sq.cm
✓ Sealing water required(LPM)	: 5 at 2.5 kg/sq.cm

Material of Construction:

✓ Main body	: SS-304 Sheet with inlet, outlet, heavy reject and dilution Nozzles with SS flanges
✓ Top cover	: SS-304 Dish end with vent nozzles for lightweight reject
✓ Rotor	: SS-304 (dynamically balanced)
✓ Shaft	: Martensitic Stainless Steel Grade 431.
✓ Sleeve	: SS 410
✓ Bearings	: STD Make
✓ Base frame	: M.S Fabricated
✓ Bearing Housing of CI	: All contact parts of SS 304
✓ Stuffing Box & Gland Packing	: SS 304 and Teflon impregnated.
Screen Drum	: 792I.D x800 L
Slot size (mm)	: 0.30mm
MOC	: Wedge wireSS316L (200 microns hard chrome coated) Top & Bottom Flanges SS304.



- ✓ Lower Power Consumption comparable with other OEM.
- ✓ Three Bearings including bottom Thrust Bearing.
- ✓ All STD Make Bearings.
- ✓ Motor Mounting Stand along With Machine.
- ✓ Screen Basket with **SS 316L, Electro- Polished Having 200 μ Hard- Chrome Plated**
- ✓ Type of vanes : **AEROFOIL DESIGN(All vane are duplex SS)**

Scope of Engineering:

- ✓ Foundations plan for the equipment.
- ✓ Buyout Specification of Motor and Foundation bolts.
- ✓ Operating and Maintenance manuals.

Accessories:

C.I. Drive & Driven pulleys with dynamically balanced.

Exclusions:

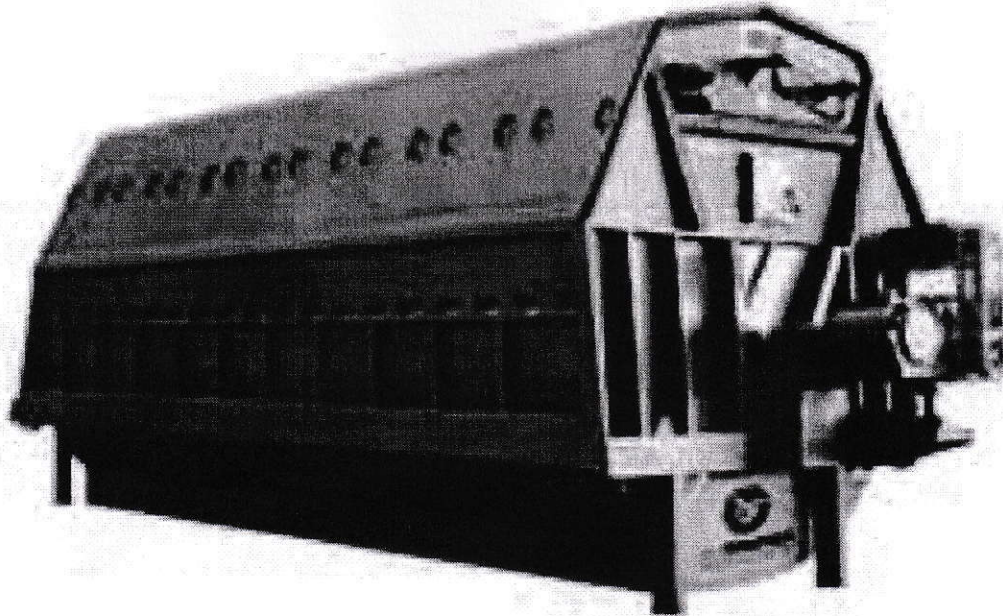
Control Panel, Motor, Pressure Gauge, Foundation Bolts, Belt and Valves.

Address G-54, MIDC, Chikalthana, Aurangabad – 431006

Contact: +91 9823435904 / +91 9326193913 Email : sutantraequipments@gmail.com

10. POLY DISC FILTER (20 Disc)

POLY DISC FILTER



POLY DISC FILTER: 3.7m (20 discs)

Design Data:

✓ Application	: Pulp Thickening
✓ Raw Material	: Mixed Waste- Kraft
✓ Capacity	: 350 TPD
✓ Inlet Consistency	: 0.8-1%
✓ Outlet Consistency of PDF	: 6-10%
✓ PH	: 6-8
✓ Temperature	: 45° C

Address G-54, MIDC, Chikalthana, Aurangabad – 431006

Contact: +91 9823435904 / +91 9326193913 Email : sutantraequipments@gmail.com

Technical Specification:

- ✓ Drum Diameter : 3700mm Approx.
- ✓ Number of Discs Installed : 20
- ✓ Total Disc Space Available : 20
- ✓ Filter Section : 20 sets disc cassette fitted with 350 micron polyester Cloth
- ✓ Spray Showers : Two types of Showers, 1 No Oscillating for Cleaning and 1 for Pulp Knock off.
- ✓ Spray Water : 900 LPM at 7 bar pressure
- ✓ Gear Box : Shaft mounted(STD Make)
- ✓ Drive Motor : 11 KW x 1000RPM for Main Drive (customer scope)
0.75 KW x 1500RPM for Shower Drive
11 KW x 1500RPM for Re Pulper Drive (Customer's Scope)
- ✓ Material : All Contact parts in SS-304
- ✓ Cloudy Water : 200-500 PPM
- ✓ Clear Water : 80-200 PPM

Scope of Supply:

- ONE- Vat trough in SS 304 with inlet Box, Pulp fall partition
- ONE- Center shaft assembly fitted with filtrate Valve on one side and drive on other side- Filtrate Valve designed for cloudy and clear filtrate outlets
- TWENTY - Disc assembly fitted with synthetic cloth.
- ONE- Main drive Gear Box for the disc
- ONE- Oscillating spray header fitted with Nozzle for pulp cleaning and one fixed spray header fitted with nozzle for pulp knock off
- ONE- Re Pulper Screw of SS-304
- ONE- Oscillating Shower Motor 0.75Kw
- Control Panel

Exclusions:

- ONE- Spray header pump with Motor
- ONE- Main Motor 11kW
- ONE- Re Pulper Motor 11kW
- ONE- Variable speed inverter for Maun drive
- INSTRUMENTATION (Level Transmitter for VAT)

11. VERTICAL PRESSURE SCREEN LOW CONSISTENCY:

Technical and Operating specifications:

✓ MODEL	: ST-VPS-L-12/15
✓ Operating Consistency (%)	: 0.6-1.2%
✓ Rotor speed (RPM)	: 190
✓ Motor speed(RPM)	: 1450
✓ Motor rating(HP/KW)	: 150/110
✓ Type of Rotor vanes	: AEROFOIL DESIGN (All vanes are duplex steel.)
✓ Rotor	: SS-304 (dynamically balanced)
✓ Inlet Pressure (kg / sq.cm)	: 1.5(min)
✓ Pressure drop(kg / sq.cm)	: 0.3 – 0.5
✓ Dilution Water Pressure	: 2kg/sq.cm
✓ Sealing water required(LPM)	: 5 at 2.5 kg/sq.cm

Material of Construction:

✓ Main body	: SS-304 Sheet with inlet, outlet, heavy reject and dilution Nozzles with flanges
✓ Top cover	: SS-304 Dish end with vent nozzles for lightweight reject
✓ Rotor	: SS-304 (dynamically balanced)
✓ Shaft	: Martensitic Stainless Steel Grade 431.
✓ Sleeve	: SS 410
✓ Bearings	: STD Make
✓ Base frame	: M.S Fabricated
✓ Bearing Housing of CI	: All contact parts of SS 304
✓ Stuffing Box & Gland Packing	: SS 304 and Teflon impregnated.
Screen Drum	: 1200I.D x 1500 L
Slot size (mm)	: 0.3mm
MOC	: Wedge wireSS316L (200 microns hard chrome coated) Top & Bottom Flanges SS304.



- ✓ Lower Power Consumption comparable with other OEM.
- ✓ Three Bearings including bottom Thrust Bearing.
- ✓ All STD Make Bearings.
- ✓ Motor Mounting Stand along With Machine.
- ✓ Screen Basket with **SS 316L, Electro- Polished Having 200 μ Hard- Chrome Plated**
- ✓ Type of vanes : **AEROFOIL DESIGN(All vane are duplex SS)**

Scope of Engineering:

- ✓ Foundations plan for the equipment.
- ✓ Buyout Specification of Motor and Foundation bolts.
- ✓ Operating and Maintenance manuals.

Accessories:

C.I. Drive & Driven pulleys with dynamically balanced.

Exclusions:

Control Panel, Motor, Pressure Gauge, Foundation Bolts, Belt and Valves.

12. VERTICAL PRESSURE SCREEN LOW CONSISTENCY:

Technical and Operating specifications:

✓ MODEL	: ST-VPS-L-06
✓ Operating Consistency (%)	: 0.8-1.5%
✓ Rotor speed (RPM)	: 395
✓ Motor speed(RPM)	: 1450
✓ Motor rating(HP/KW)	: 30/22
✓ Type of Rotor vanes	: AEROFOIL DESIGN (All vanes are duplex steel.)
✓ Rotor	: SS-304 (dynamically balanced)
✓ Inlet Pressure (kg / sq.cm)	: 1.5(min)
✓ Pressure drop(kg / sq.cm)	: 0.3 – 0.5
✓ Dilution Water Pressure	: 2kg/sq.cm
✓ Sealing water required(LPM)	: 5 at 2.5 kg/sq.cm

Material of Construction:

✓ Main body	: SS-304 Sheet with inlet, outlet, heavy reject and dilution Nozzles with flanges
✓ Top cover	: SS-304 Dish end with vent nozzles for lightweight reject
✓ Rotor	: SS-304 (dynamically balanced)
✓ Shaft	: Martensitic Stainless Steel Grade 431.
✓ Sleeve	: SS 410
✓ Bearings	: STD Make
✓ Base frame	: M.S Fabricated
✓ Bearing Housing of CI	: All contact parts of SS 304
✓ Stuffing Box & Gland Packing	: SS 304 and Teflon impregnated.

Screen Drum	: 595I.D x 600 L
Slot size (mm)	: 0.35mm
MOC	: Wedge wireSS316L (200 microns hard chrome coated)
	Top & Bottom Flanges SS30



- ✓ Lower Power Consumption comparable with other OEM.
- ✓ Three Bearings including bottom Thrust Bearing.
- ✓ All STD Make Bearings.
- ✓ Motor Mounting Stand along With Machine.
- ✓ Screen Basket with SS 316L, Electro- Polished Having 200 μ Hard- Chrome Plated
- ✓ Type of vanes : AEROFOIL DESIGN(All vane are duplex SS)

Scope of Engineering:

- ✓ Foundations plan for the equipment.
- ✓ Buyout Specification of Motor and Foundation bolts.
- ✓ Operating and Maintenance manuals.

Accessories:

C.I. Drive & Driven pulleys with dynamically balanced

Exclusions:

Control Panel, Motor, Pressure Gauge, Foundation Bolts, Belt and Valves.

Address G-54, MIDC, Chikalthana, Aurangabad – 431006

Contact: +91 9823435904 / +91 9326193913 Email : sutantraequipments@gmail.com

ANNEXURE - II
COMMERCIAL OFFER

SR. NO.	EQUIPMENTS	QTY	RATE/EQUIPMENT (INR)	TOTAL AMOUNT (INR)
1	HICON PULPER 35 M ³	1 No.	2,93,00,000/-	2,93,00,000/- (Two Crore Ninety Three Lakh Only)
2	DETRASHER-1800	1 No.		
3	CONTROL PANEL	1 No.		
4	HIGH DENSITY CLEANER 4000 LPM	2 No.		
5	PRESSURE SCREEN M-10 (Hole Ø2.2.mm)	1No.		
6	TURBO SEPARATOR-800	1 No.		
7	4 STAGE CENTRI CLEANER 600 LPM 40+12+4+1	1 No.		
8	COMBO SCREEN	1 No.		
9	PRESSURE SCREEN L-12 (SLOT 0.25)	1 No.		
10	PRESSURE SCREEN L-08 (SLOT 0.30)			
11	POLY DISC FILTER (20 Disc)	1 No.		
12	PRESSURE SCREEN L-12/15 (SLOT 0.30mm)	1 No.		
13	PRESSURE SCREEN L-06 (SLOT 0.35mm)	1 No.		

Address G-54, MIDC, Chikalthana, Aurangabad – 431006

Contact: +91 9823435904 / +91 9326193913 Email : sutantraequipments@gmail.com